

Facts on indoor air quality – first step to a healthier environment

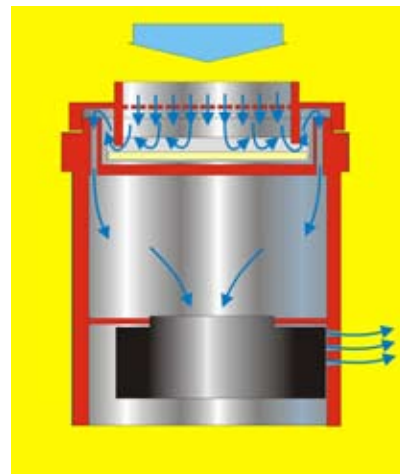
Awareness of Indoor air quality and problems bad indoor air can cause is increasing all over the world. Facts on how a home's or office's indoor air quality rates is the first step to a healthier environment.

Clean Air Pro Air Sampler utilizes the Settling Plate Method

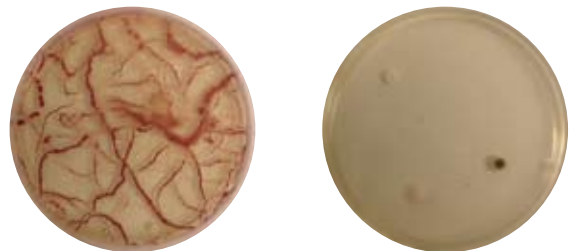
The petri dish test kit is used for counting bacterial and mould contents in the air. It can be used in combination with the Air Sampler. This kit is ideal for professional pre- and post-testing of contaminated areas. If the test shows a high growth of microbes, the contaminated area should be treated with a Clean Air air purification unit. After a specific time, a control sample is taken. Little or no growth should be evident, indicating successful treatment.

Characteristics:

- This professional Indoor Air Quality Sampler takes 500 liters (0.5 m³) of indoor air and deposits microbes into a petri dish giving you a broad sample of indoor air quality.
- Polished aluminum for years of service and easy to clean
- Easy to use
- Pre-calibrated
- Provides you with a professional air quality test
- Air Sampler draws a broad sample of indoor air into the petri dish for a more quantitative test



Technical specifications	Clean Air Sampler
Voltage	12 Volt DC
Current (standby)	0.25 amps
Current (max.)	0.35 amps
Current (operating)	0.25 amps
Air flow	100 liters/minute (+/- 5%)
Material	Aluminium
Timer	5 minutes



*supplier reserves the right to technical modifications without further notice

Clean Air

Clean Air Europe

Ambachtsweg 2
7021 BT ZELHEM
NETHERLANDS

PO Box 48
7020 AA ZELHEM
NETHERLANDS

tel. +31 314 62 33 41
fax +31 314 62 33 11
info@cleanaireurope.eu
www.cleanaireurope.eu